



VUTEk GS3250 Pro



This document bridges the gap between the Fiery XF documentation and the VUTEk documentation.

EPL and color-compatible printers

- VUTEk GS3250 Pro White
- VUTEk GS2000 Pro
- VUTEk GS2000 Pro White

Ink types

- VUTEk GS v3.1
- VUTEk GS 3M
- Thermoform ink
- Coroplast ink
- Chromoform ink
- TransForm-TF (7.3.2 onwards)

Printer settings

The following settings are color-dependent. You define them in Color Tools when you create a new base linearization (EPL) file. EPL files contain all the settings necessary to reproduce colors and ink coverage on the printer. They also contain a reference to an ICC color profile.

Color modes

- CMYK, Advanced (supported since Fiery XF 4.5)
- CMYKcmyk, Advanced (supported since Fiery XF 4.5)
- CMYK (supported since Fiery XF 6.1)
- CMYKcmyk (supported since Fiery XF 6.1)

Color Tools displays only color modes that can be used for EPL creation, as well as those whose colors are compatible, even if the color mode is no longer supported.

Resolutions

- Fast scan: 600 dpi; slow scan: 360 dpi
- Fast scan: 1000 dpi; slow scan: 720 dpi

Halftoning

- Error diffusion (SE1)
- Stochastic screening (SE2)

Note: EPL files created with Fiery XF 6.3 will use a new internal stochastic screening (SE2+). EPLs built with a version prior to Fiery XF 6.3 will still use the legacy stochastic screening (SE2).

Dot modes

- Fixed: Single drop size print mode
- Grayscale: Multiple drop size print mode (available for lower resolutions only)

Printer driver features

Print Head Control Bar

This Fiery XF printer driver supports the Print Head Control Bar. For more information on how to use it, see “Printing to a VUTEk printer” in the Fiery XF user manual. You can download the user manual from <http://help.efi.com/index/index.html>.

Printer encoder - VUTEk RTL file output

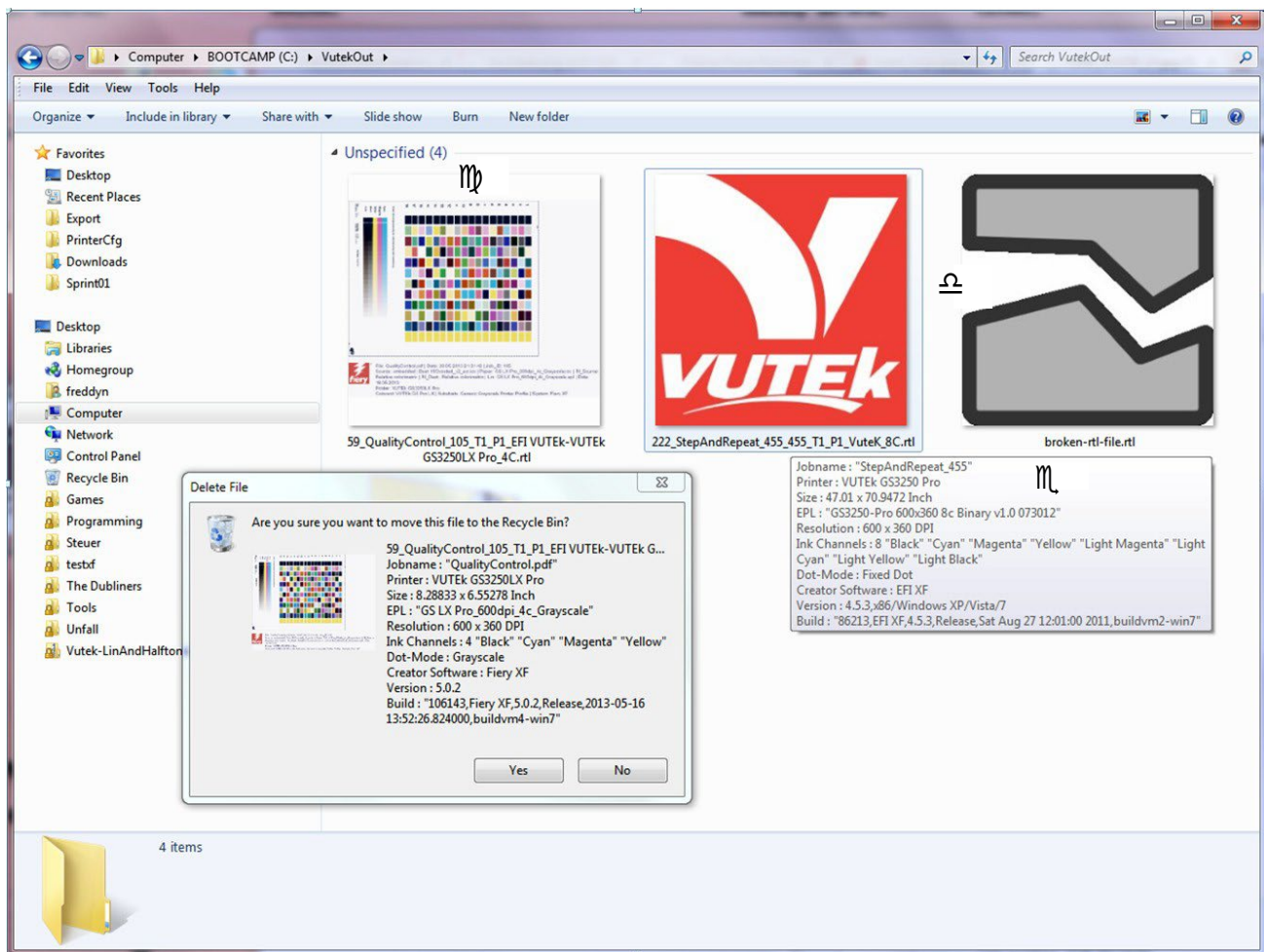
The Fiery XF printer driver encoder generates image data in HP-RTL (Raster Transfer Language) format, with additional proprietary metadata in the PJJL section. Since the GS generation of VUTEK printers, image data has been compressed into packbits. The image data for older printer models is not compressed.

It is possible to embed preview images into the VUTEk RTL files. The Fiery Proserver RTL extension for Windows File Explorer uses it to show the embedded preview as a thumbnail image instead of a VUTEk logo. Usually this feature is deactivated because it can cause issues with reading the RTL on first generation VUTEk printer software for GS-series printers. However, it can be activated by request.

Printer decoder - Windows Explorer shell extension for VUTEk RTL files

A Windows shell extension for RTL files is available in the Windows version of Fiery XF. This shell extension provides RTL file validation, an Info tooltip to show metadata from the RTL and thumbnail previews, if the RTL contains embedded previews.

The screenshot shows three different statuses for RTL files:



Key	Description
1	RTL file is valid. It contains an embedded preview.
2	RTL file is valid, but it contains no embedded preview. Instead of a preview a VUTEk logo will be used to indicate a valid RTL file.
3	RTL file is invalid. The file has an .RTL file extension, but the validation failed. It cannot be used on VUTEk printer software.

While Fiery XF is processing an RTL file, it may show up as an invalid RTL until the RIP process has finished. To enforce a refresh and re-validation from the Explorer shell extension, press F5.

Printing via IP

Printing to a VUTEk via an IP address can speed up the process and enables integration into other products such as EFI Pace, Fiery Navigator, etc. When jobs are printed via the IP address, the VUTEk printer software does not need to scan the complete RTL file (which takes some time). Instead, it reads the GIF preview that you can select to create in Fiery XF. This accelerates the process noticeably.

For more information on how to set up a VUTEk printer in Fiery XF, see “Printing to a VUTEk printer” in the Fiery XF user manual. You can download the user manual from <http://help.efi.com/index/index.html>.